



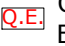
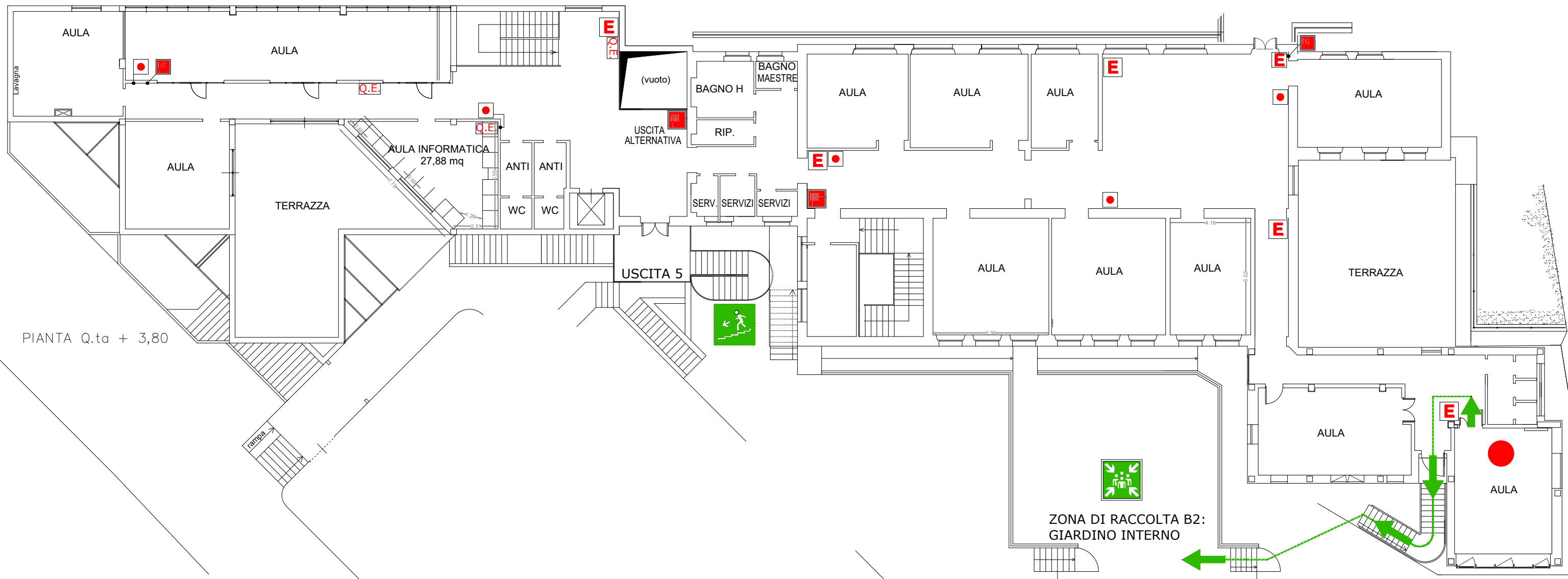


PIANO DI EMERGENZA

VIE DI ESODO plessi Scuola Primaria - Scuola Secondaria I Grado "L. Lanzi" di Stroncone - PIANO PRIMO (quota +3,80)

LEGENDA

-  VOI SIETE QUI
-  VIA DI ESODO
-  ZONA DI RACCOLTA
-  SCALA DI SICUREZZA
-  ESTINTORE PORTATILE
-  IDRANTE
-  ALLARME ANTINCENDIO
-  QUADRO ELETTRICO



PIANTA Q.ta + 3,80

